

Green grow the Leaves



Green grows the leaves up - on the haw - thorn tree;



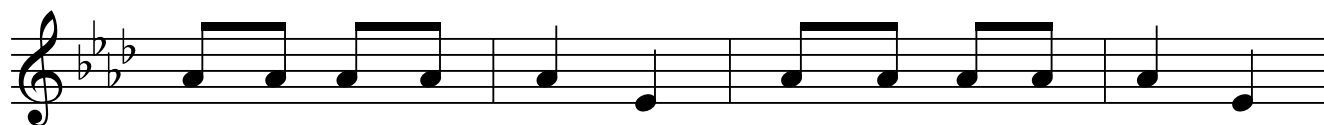
Some they grow high ___ and ___ some they grow lee.



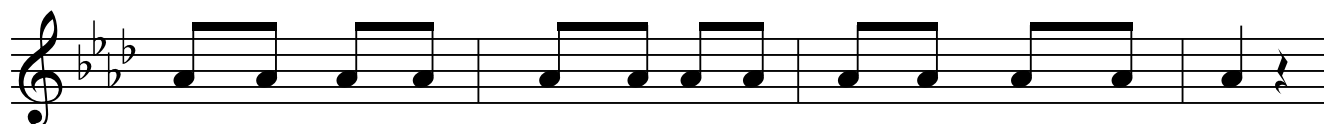
But the wrang-lers and the jang-lers they nev-er can a - gree,



And the bur-then of my song goes ___ mer - ri - - ly.



Twen-ty, nine-teen, eigh - teen, seven-teen, Six-teen, fif - teen,



four-teen, thir-teen, twelve, e - lev - en, ten, nine, eight, seven six,



five, _four, - three, And the bur-then of my song goes - mer-ri - ly.

Green grows the leaves upon the hawthorn tree;
Some they grow high and some they grow lee.
But the wranglers and the janglers they never can agree,
And the burthen of my song goes merrily.
Twenty, nineteen, eighteen, seventeen,
Sixteen, fifteen, fourteen, thirteen,
Twelve, eleven, ten, nine, eight,
Seven, six, five, four, three,
And the burthen of my song goes merrily.