

Fill the Cup



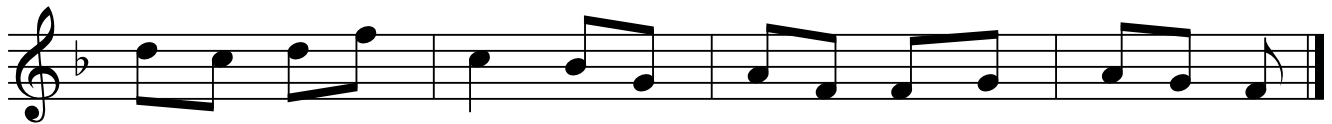
Oh, put the ket-tle there on the hob m' dar-lint, hob m' dar-lint.



Put the ket-tle there on the hob m' dar-lint, That's the way.



We drink a cup of tea in the ear-ly morn-ing, ear-ly morn-ing,



Drink a cup of tea in the ear-ly morn-ing, Ever-y day.

Oh, put the kettle there on the hob m' darlint, hob m' darlint.

Put the kettle there on the hob m' darlint,

That's the way.

We drink a cup of tea in the early morning, early morning,

Drink a cup of tea in the early morning,

Every day.

But first you warm the pot while the kettle's singing, kettle's singing.

First you warm the pot while the kettle's singing

That's the way!

We drink a cup of tea in the middle morning, middle morning,

Drink a cup of tea in the middle morning,

Every day.

And then you get the tea from the silver caddy, silver caddy,

Then you get the tea from the silver caddy,

That's the way!

We drink a cup of tea when our lunch is over, lunch is over,

Drink a cup of tea when our lunch is over

Every day!

Now measure out the tea in a silver teaspoon, silver teaspoon,
Measure out the tea in a silver teaspoon,
That's the way!
We drink a cup of tea in the afternoon, afternoon,
Drink a cup of tea in the afternoon,
Every day.

And pour the water on while the kettle's boiling, kettles boiling,
Pour the water on while the kettle's boiling,
That's the way!
Drink a cup of tea when the clock strikes seven, clock strikes seven,
Drink a cup of tea when the clock strikes seven,
Every day.

Now put the pot of tea on a tray m' darlin', tray m' darlin'.
Put the pot of tea on a tray m' darlin'
That's the way!
Drink a cup of tea when the moon is shining, moon is shining,
Drink a cup of tea when the moon is shining,
Every night.